



Warwick Road | | Stevenage | SG2 0QT

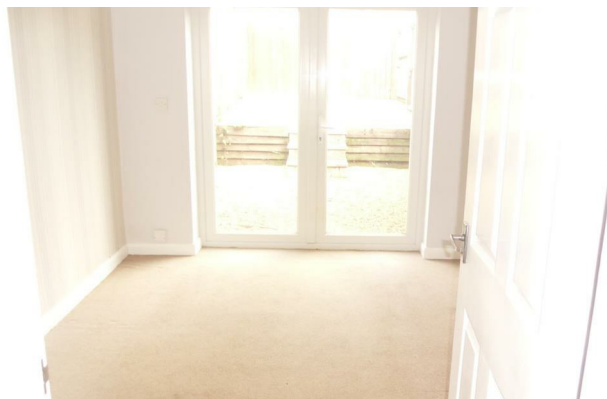
£1,095 Per Calendar Month



Warwick Road |
 Stevenage | SG2 0QT
 £1,095 Per Calendar Month

A beautiful one bedroom house in the popular area of Chells, the property has its own private garden and summer house. The property also has its own private driveway for one car. The property is walking distance from the bus stops and shops. Viewings are highly recommended.

- One Bedroom House
- Garden
- Double Glazing
- Driveway for One Car
- Summer House



| Energy Efficiency Rating | | |
|--|----------------------------|-----------|
| | Current | Potential |
| <i>Very energy efficient - lower running costs</i> | | |
| (92 plus) A | | |
| (81-91) B | | |
| (69-80) C | | |
| (55-68) D | | |
| (39-54) E | | |
| (21-38) F | | |
| (1-20) G | | |
| <i>Not energy efficient - higher running costs</i> | | |
| England & Wales | EU Directive 2002/91/EC | |

Office 9
 Kellard House London Road
 Woolmer Green
 Hertfordshire
 SG3 6FP
 01438231200
 property@marksimonestates.co.uk
 http://www.marksimonestates.co.uk